

LinearChain with pitch 60



D5-227e2/09.05

Subject to technical changes

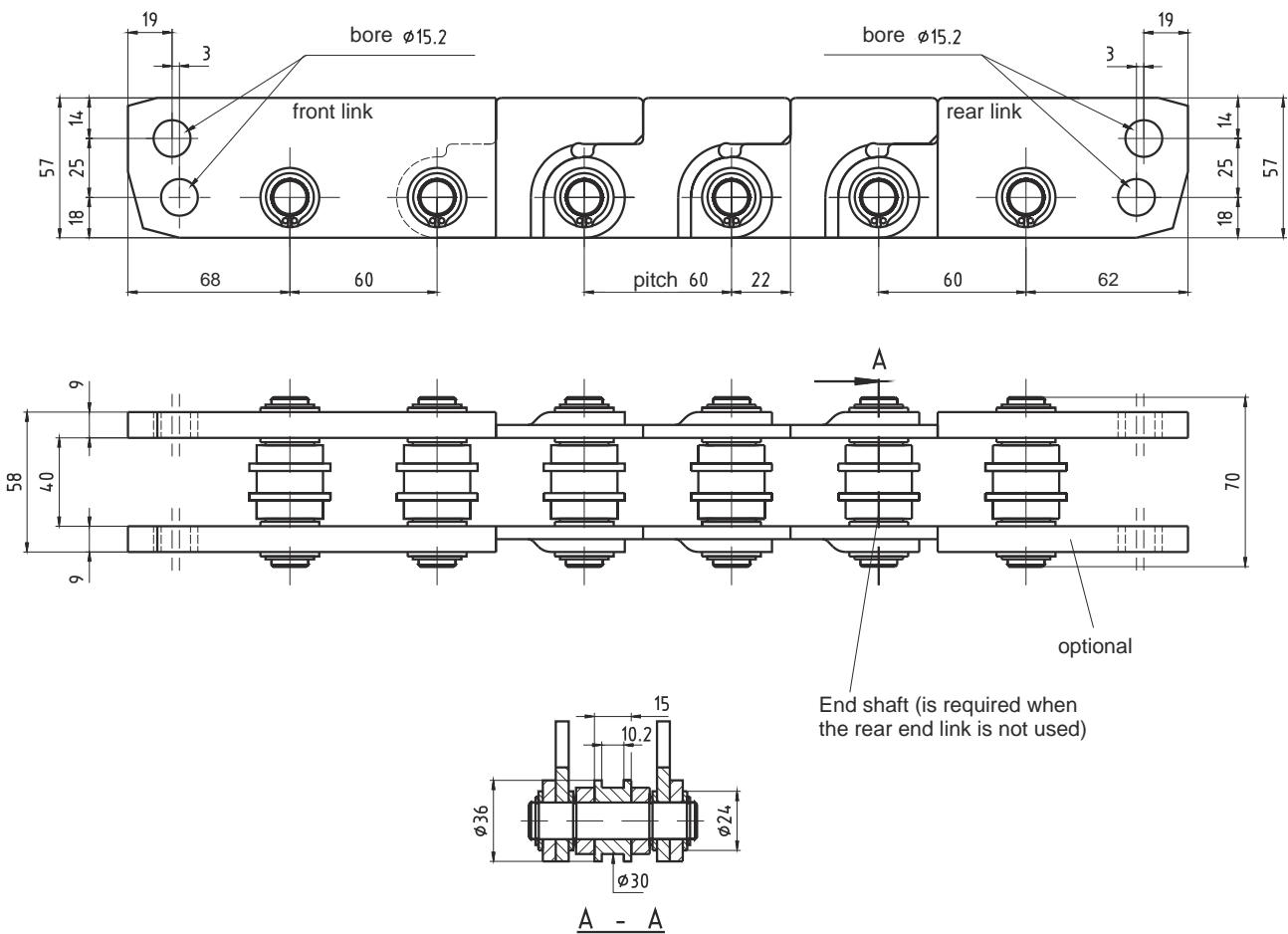
4.0 LinearChains with pitch 60 mm

4.1 Type 60 PS

4.1.1 Technical data

- max. push force (for 1 meter of chain unguided, load guided): 18000 N
- weight per meter:..... 8 kg
- number of links per meter: 17

4.1.2 Dimensions

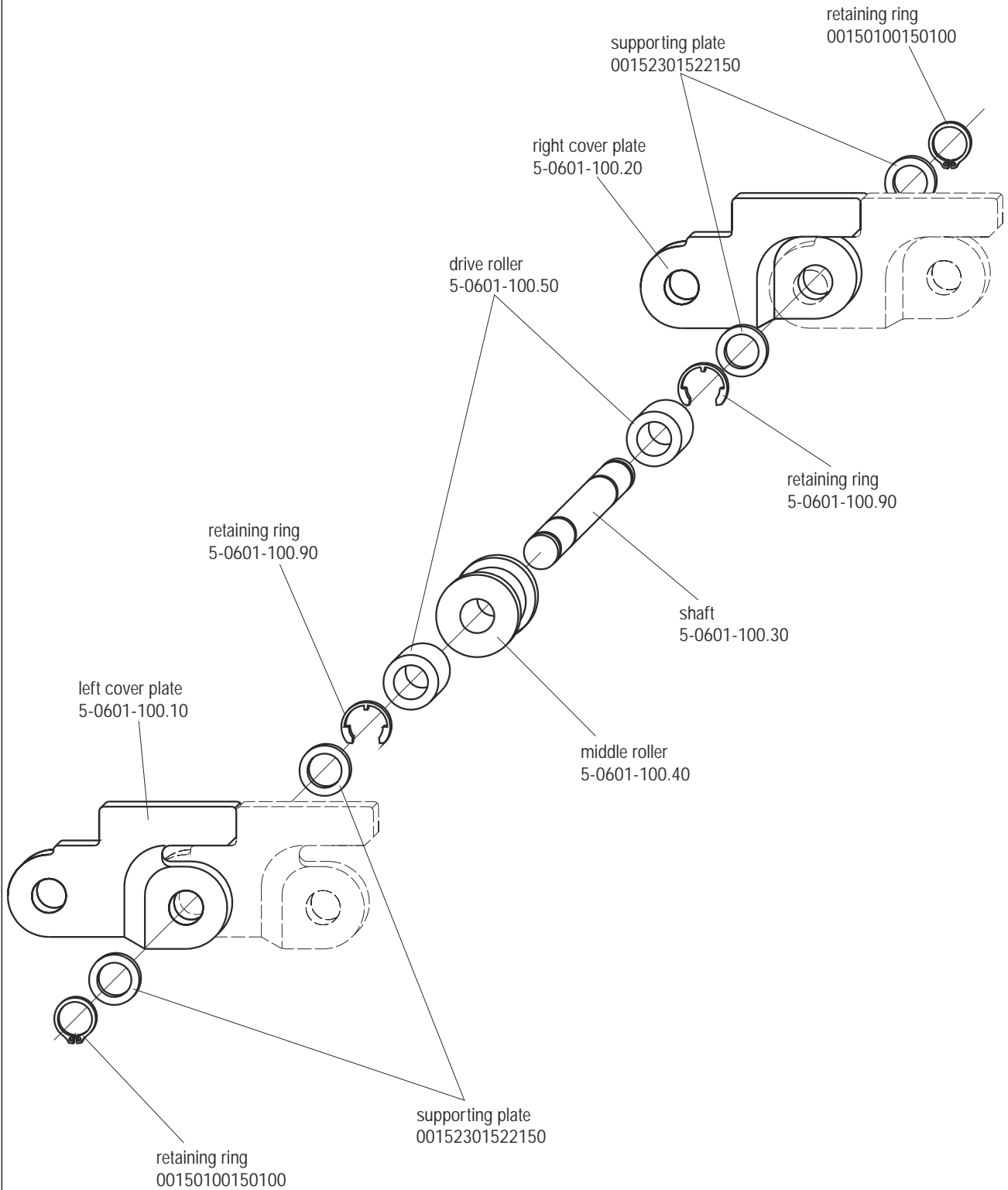


D5-228e4/02.09

Subject to technical changes

Type 60 PS

4.1.3 Assembly of the standard chain link 5-0601-100.00



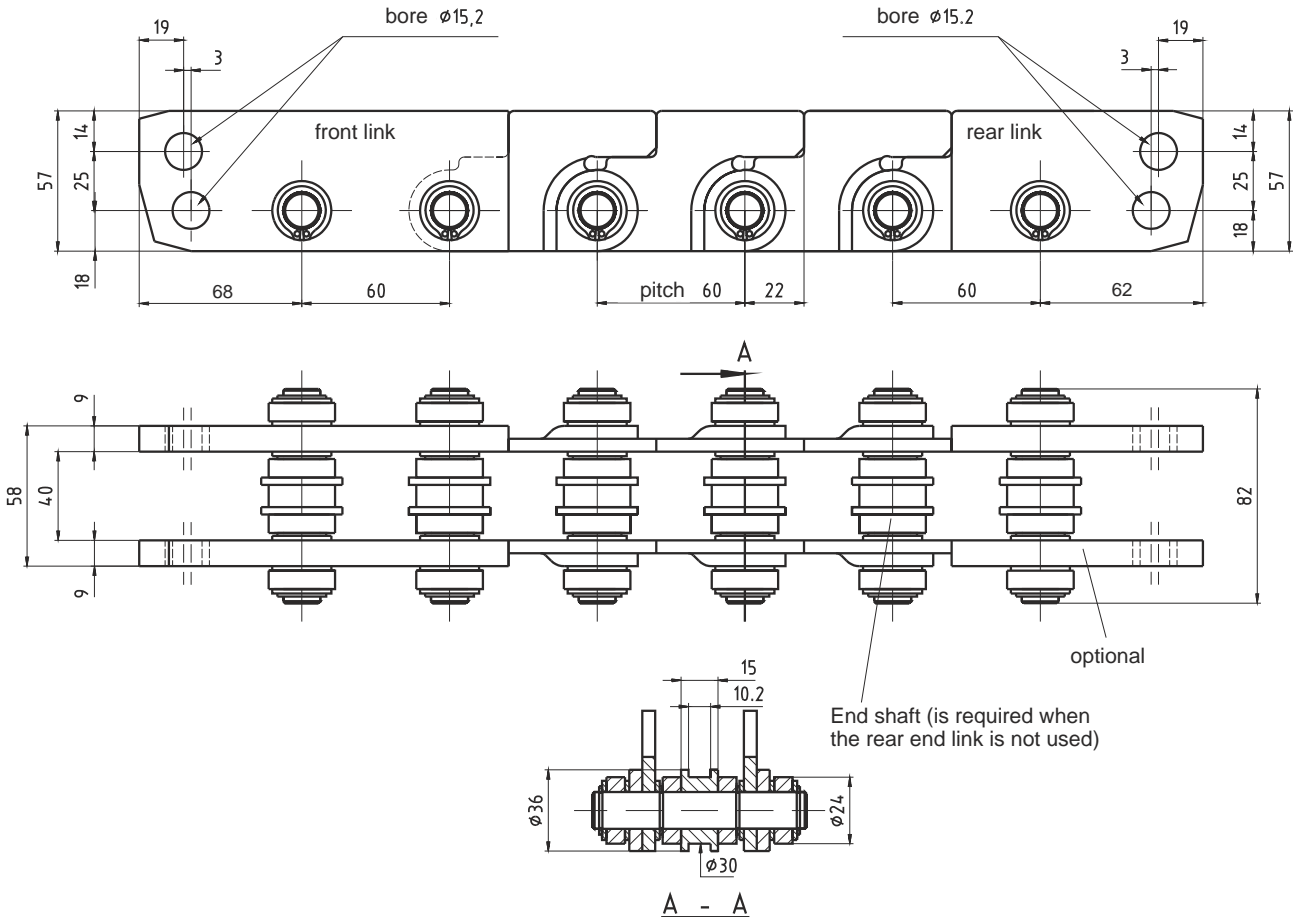
Subject to technical changes

4.2 Type 60 PSG

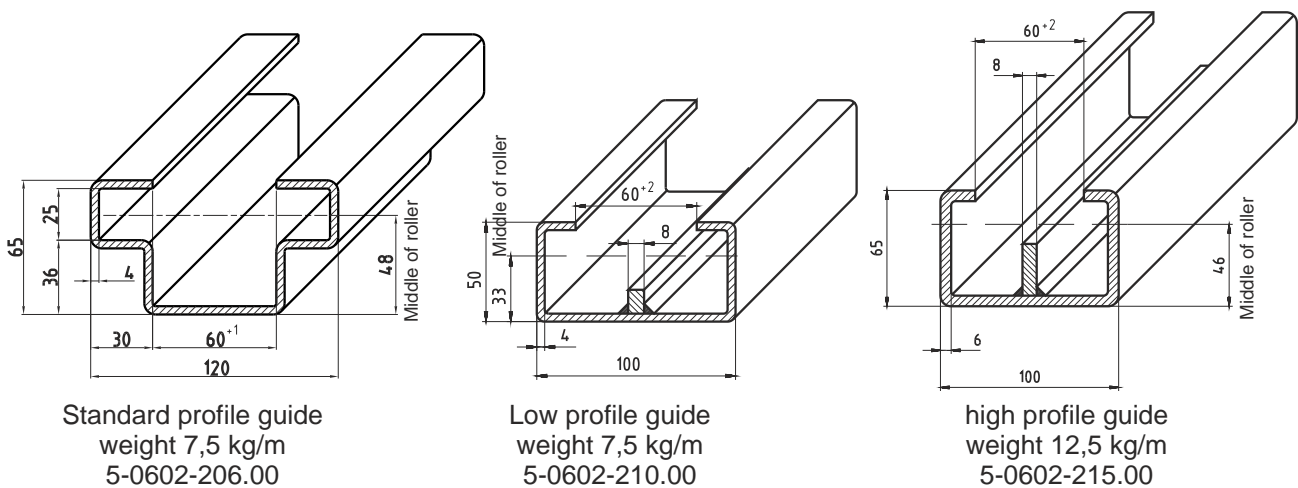
4.2.1 Technical data

- max. push force (for 1 meter of chain unguided, load guided): 18000 N
- weight per meter:..... 8,7 kg
- number of links per meter: 17

4.2.2 Dimensions

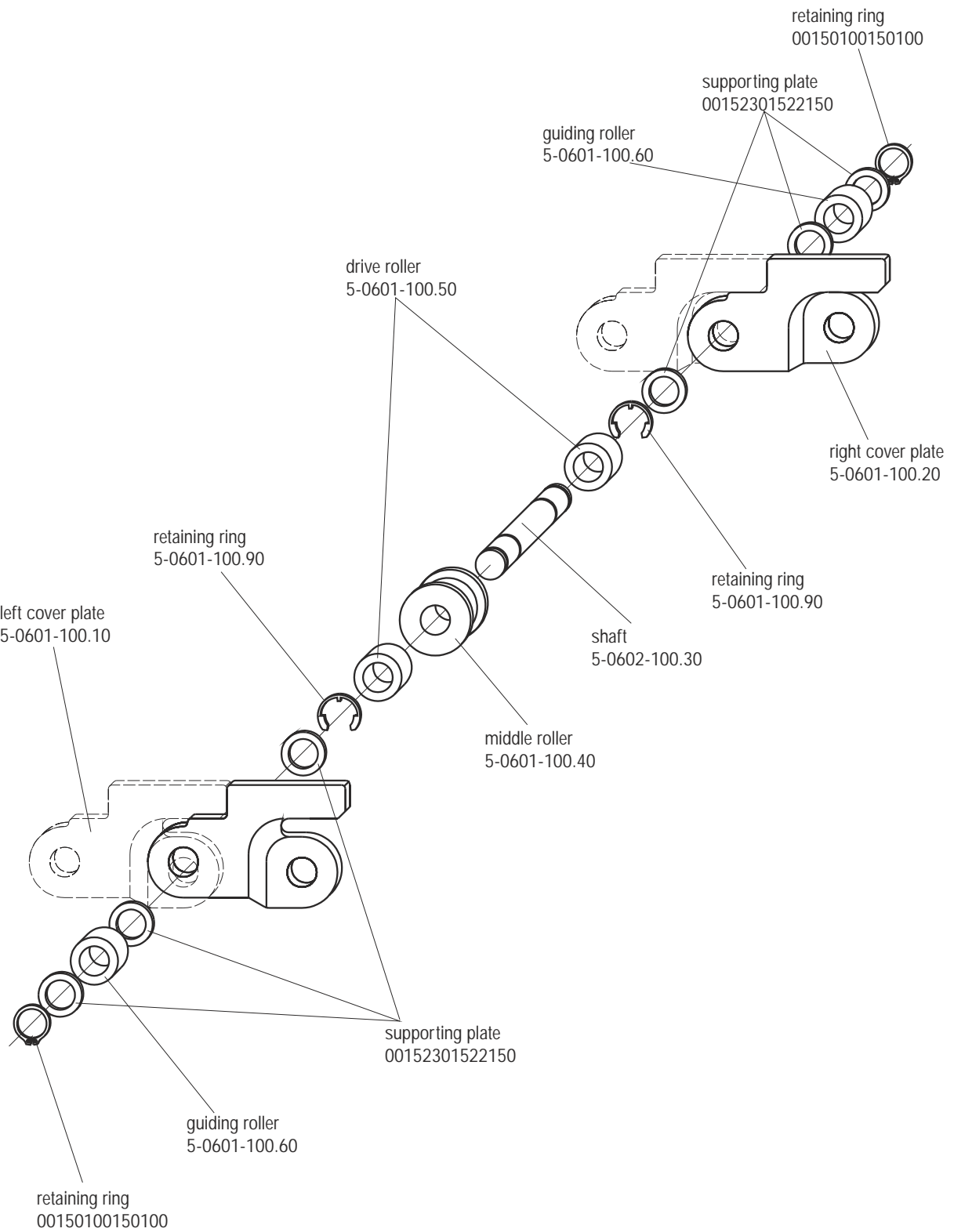


4.2.3 Guiding rail



Type 60 PSG

4.2.3 Assembly of the standard push chain 5-0602-100.00



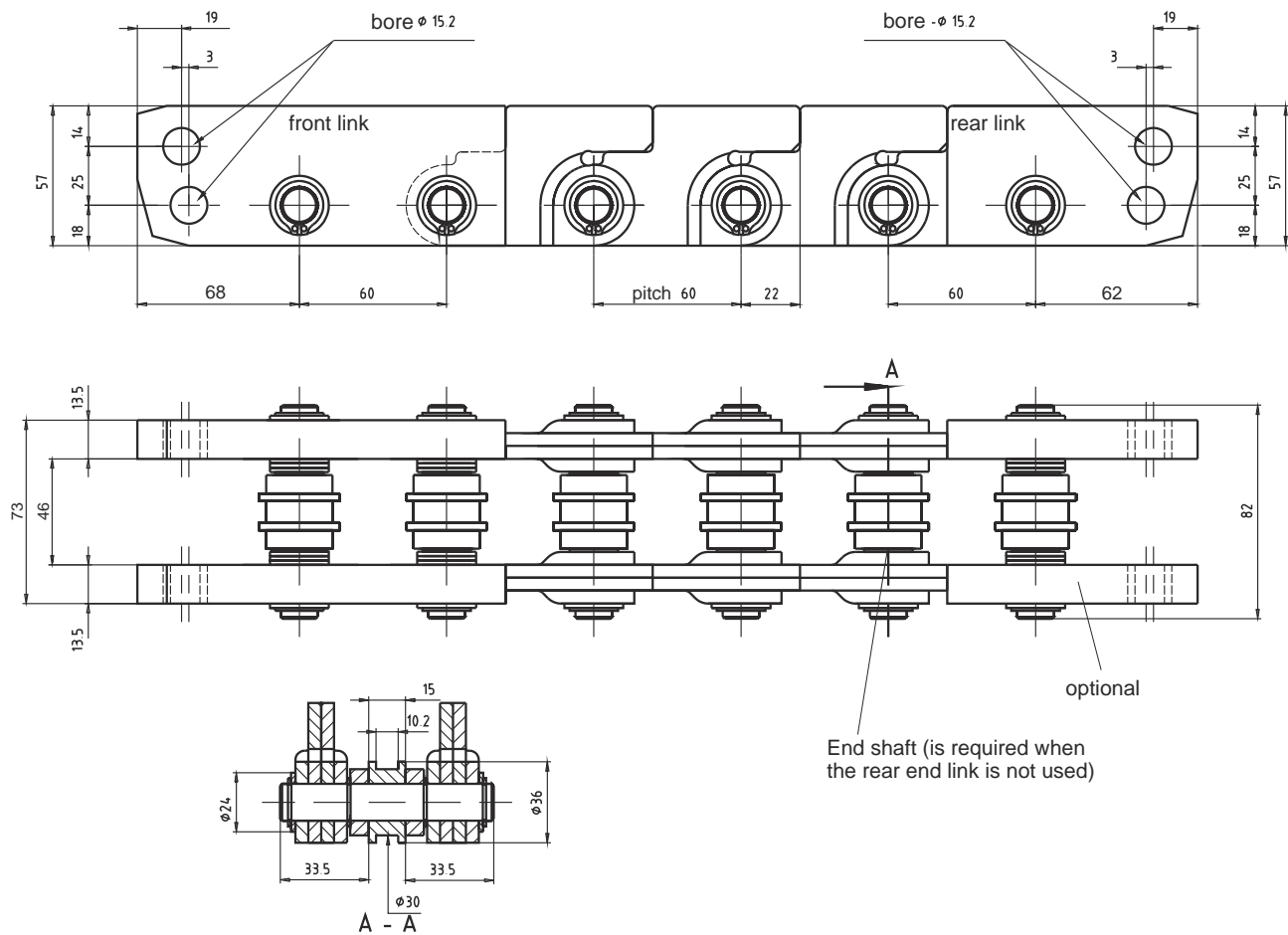
Subject to technical changes

4.3 Type 60 PSR

4.3.1 Technical data

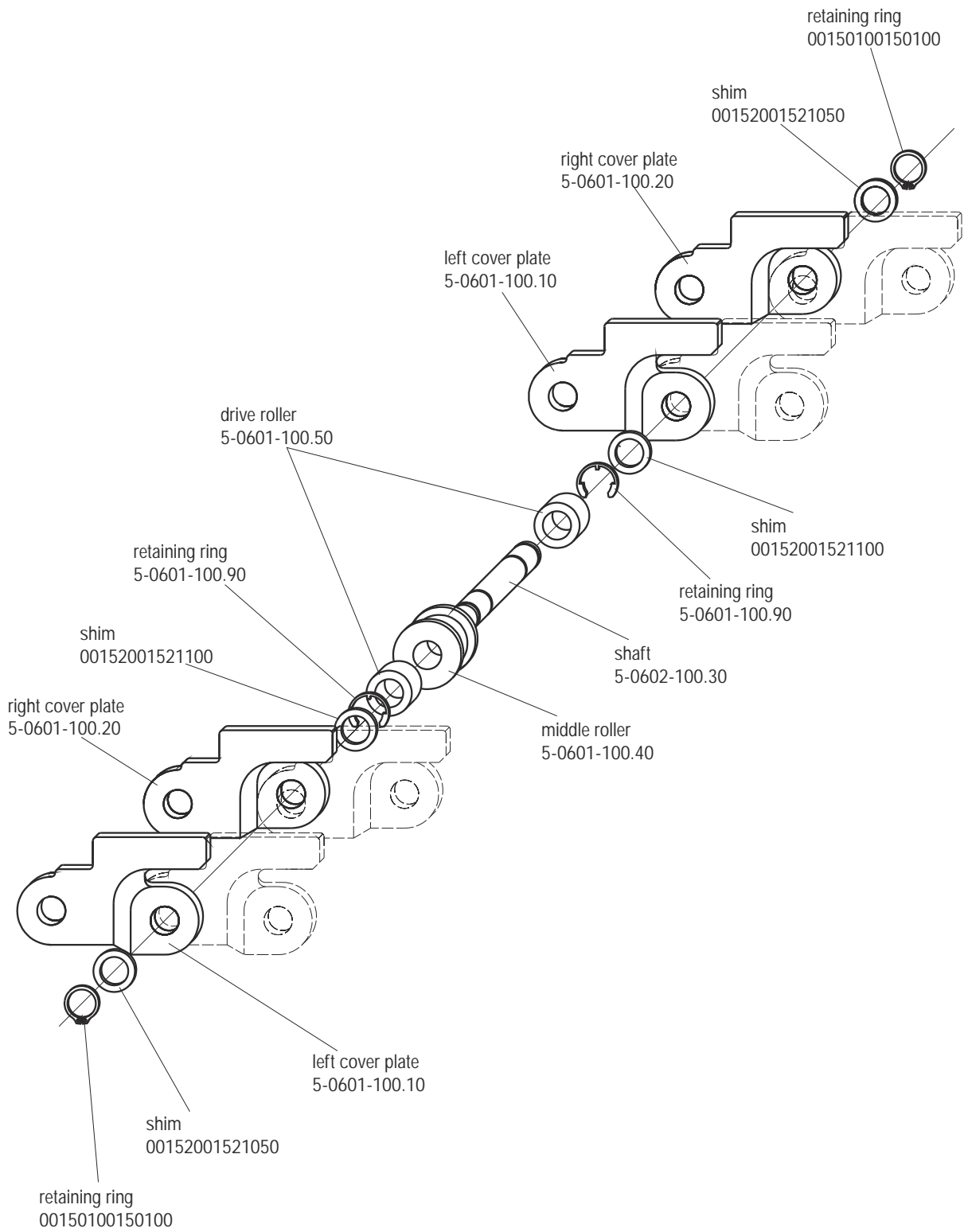
- max. push force (for 1 meter of chain unguided, load guided): 18000 N
- weight per meter:..... 9,5 kg
- number of links per meter: 17

4.3.2 Dimensions



Type 60 PSR

4.3.3 Assembly of the standard chain link 5-0603-100.00



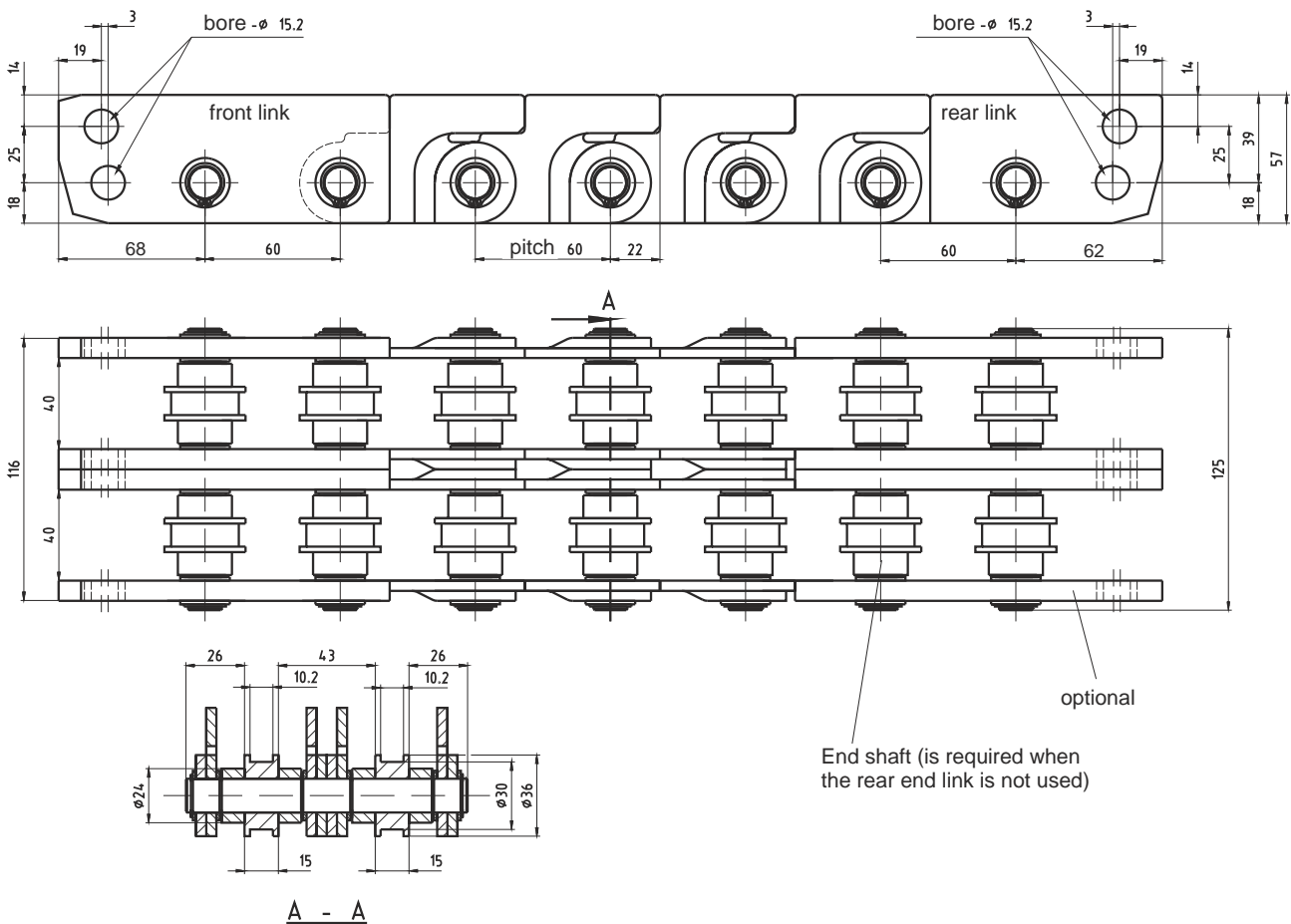
Subject to technical changes

4.4 Type 60 PD

4.4.1 Technical data

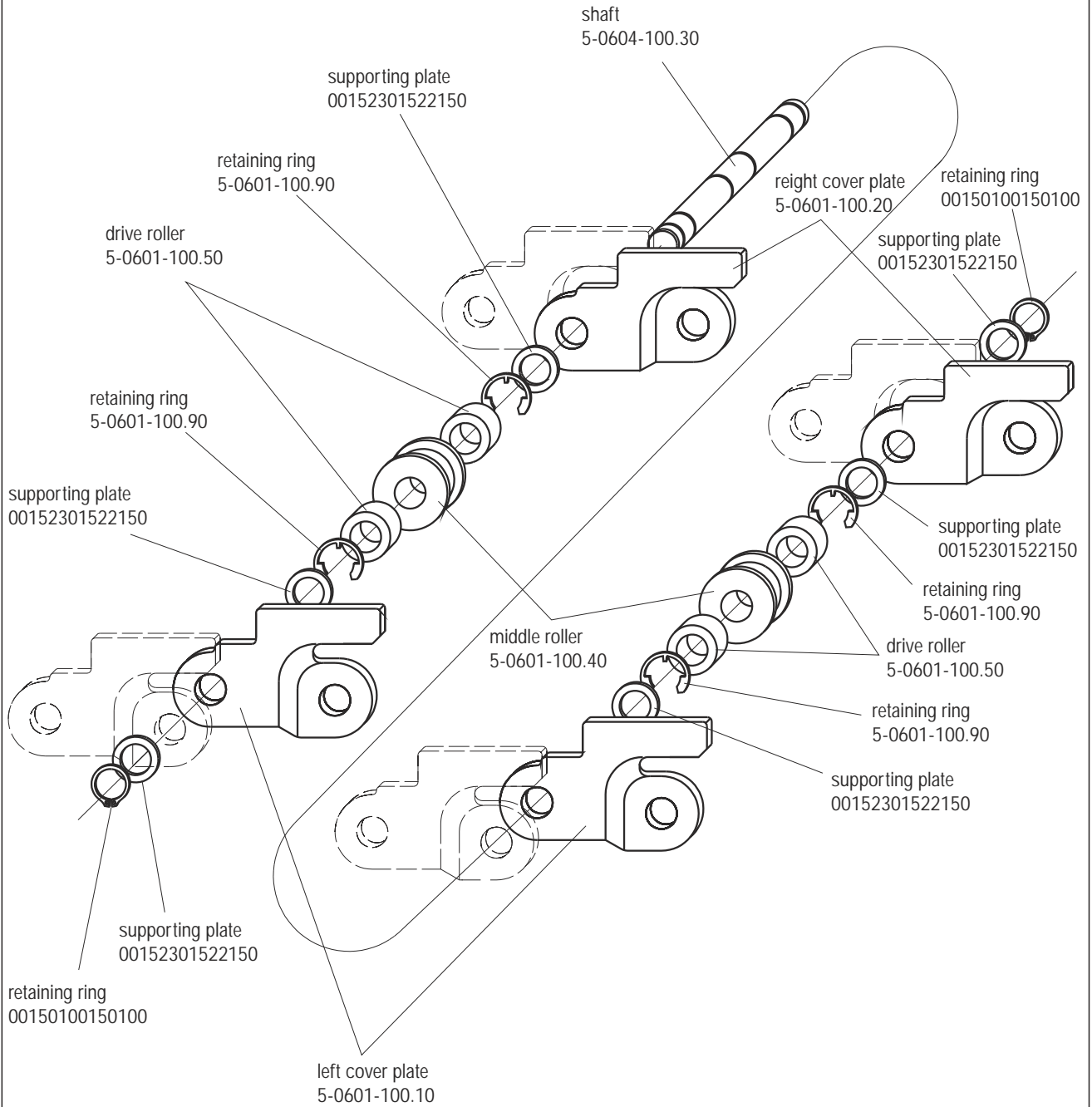
- max. push force (for 1 meter of chain unguided, load guided):.....35.000 N
- weight per meter: 15 kg
- number of links per meter: 17

4.4.2 Dimensions



Type 60 PD

4.4.3 Assembly of the standard chain link 5-0604-100.00



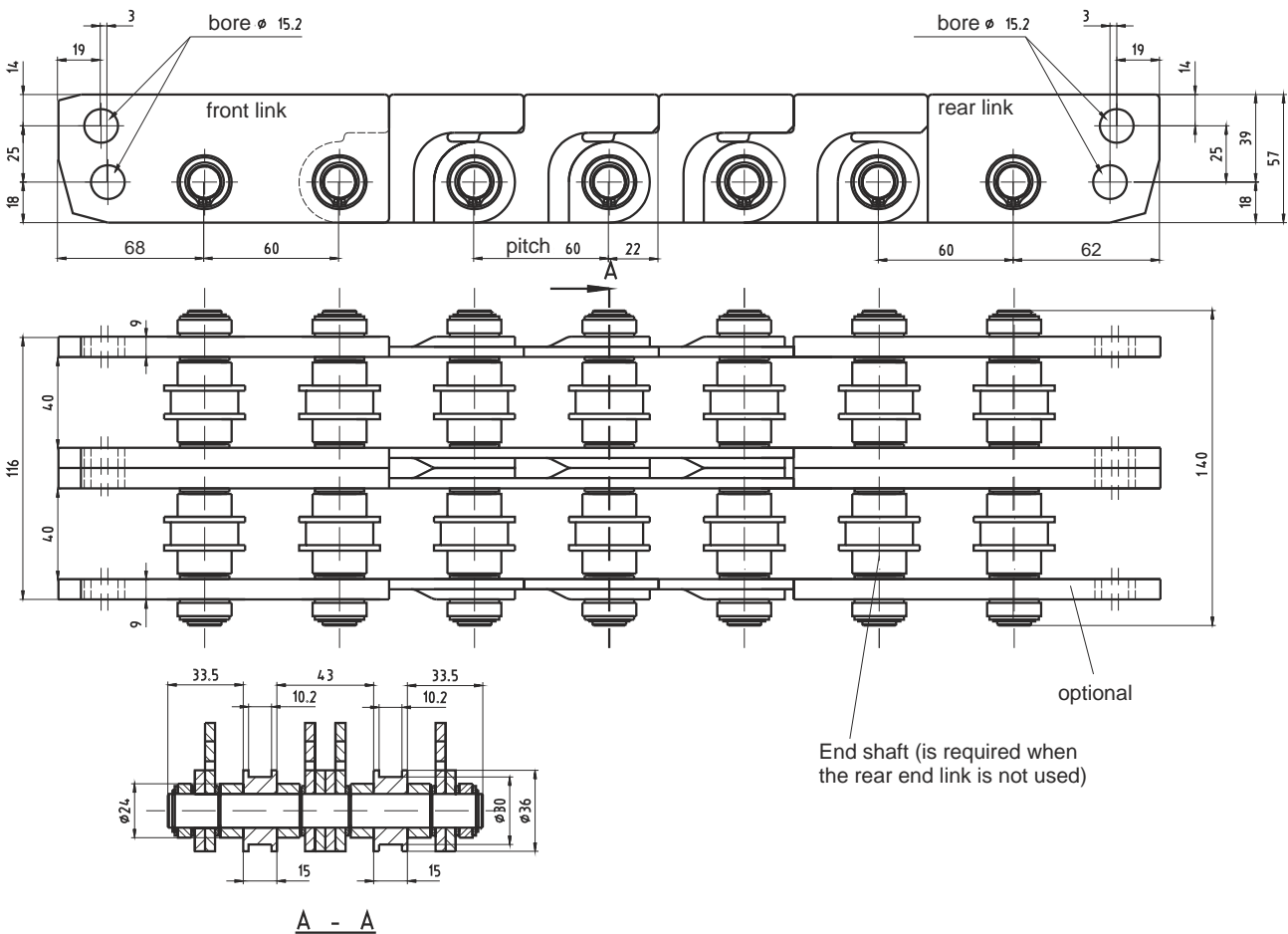
Subject to technical changes

4.5 Type 60 PDG

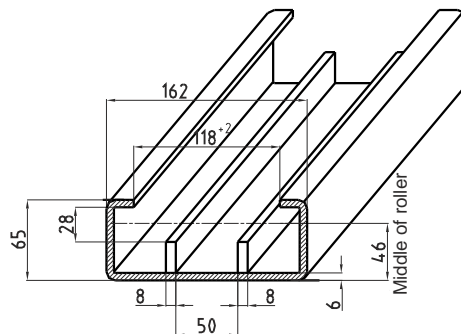
4.5.1 Technical data

- max. push force (for 1 meter of chain unguided, load unguided):..... 35.000 N
- weight per meter:..... 16 kg
- number of links per meter: 17

4.5.2 Dimensions



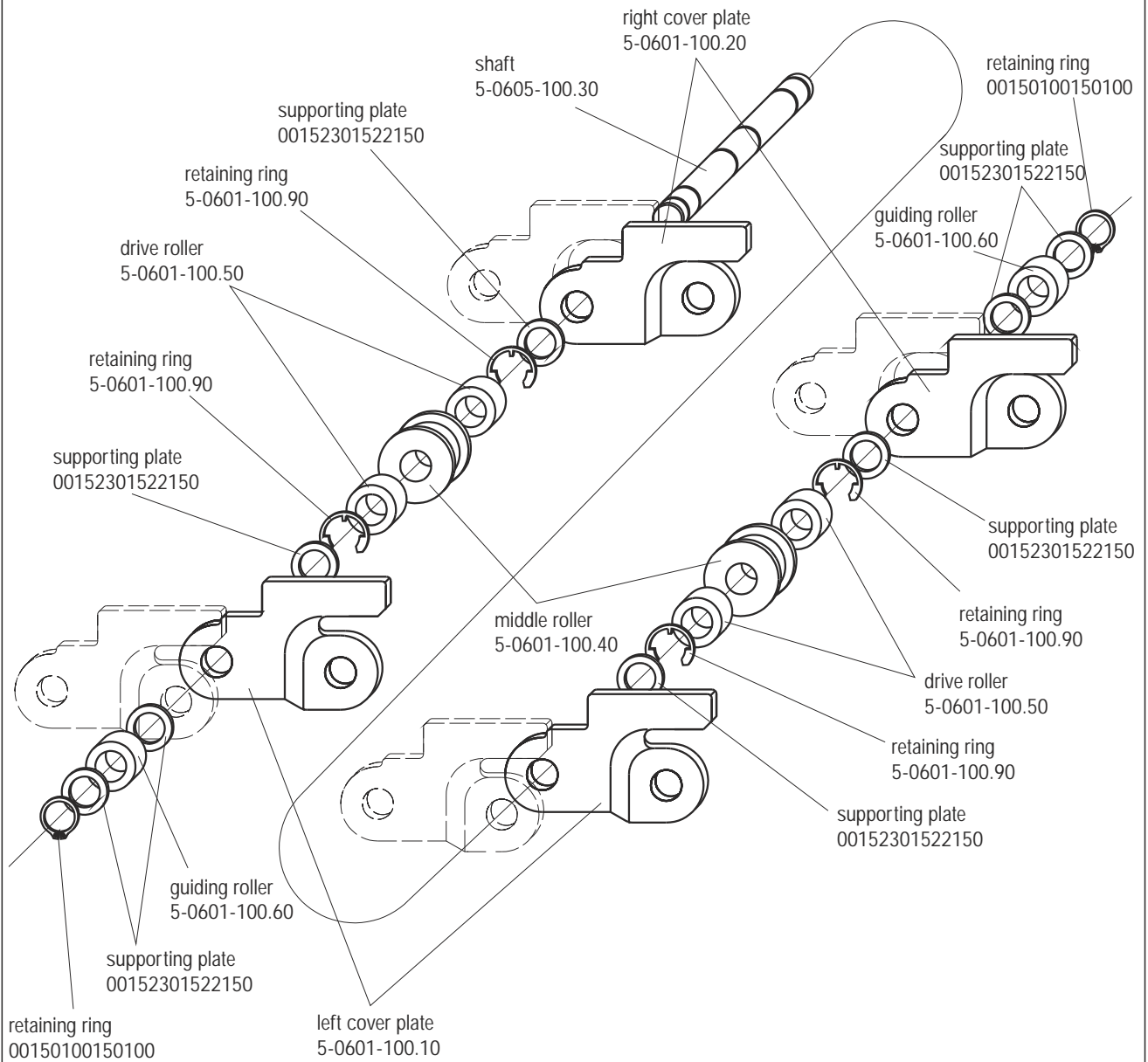
4.5.3 Guiding rail



weight: 19,3 kg/m
Z5-0605-210.00

Typ 60 PDG

4.5.4 Assembly of the standard chain link 5-0605-100.00



Subject to technical changes