

# Mini 3

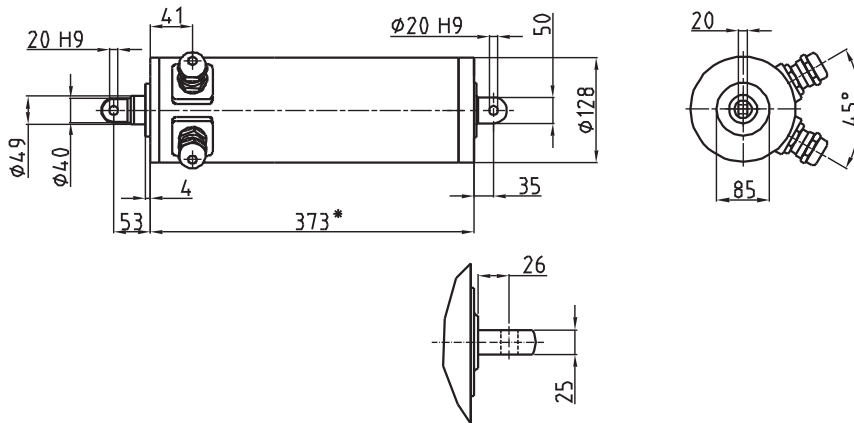


Subject to technical changes

Framo Morat GmbH & Co. KG  
Höchst 7 • D-79871 Eisenbach

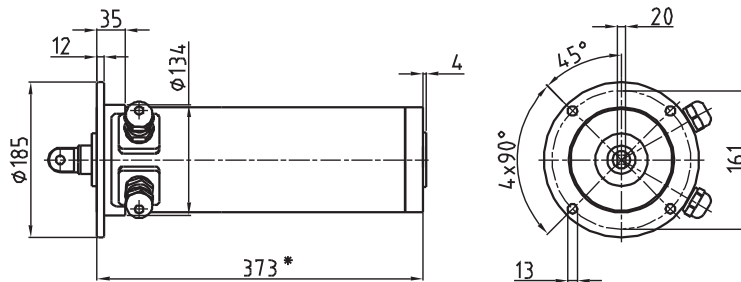
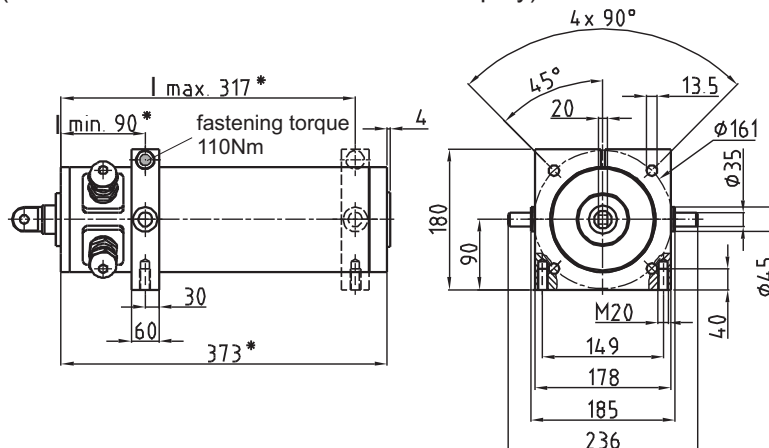
Tel.: +49 (0) 7657 / 88-0  
Fax: +49 (0) 7657 / 88-333

[www.framo-morat.com](http://www.framo-morat.com)  
[info@framo-morat.com](mailto:info@framo-morat.com)

**Dimensions of standard drive and fixing versions**
**[mm]**
**Standard version: Three-phase/AC, stroke 175 mm, transmission 1-stage, fixing A**


The \* marked dimensions specify the drive length, of a standard drive (that means stroke length 175mm and transmission ratio 1-stage). For longer stroke length and/or different gear stages please add the corresponding dimensions **x** and **y** from the table below.

Gear	1-stage	2-stage	3-stage		stroke length	175	250	300	350	400	450	500
<b>x</b>	0	35	70	<b>+</b>	<b>y</b>	0	75	125	175	225	275	325

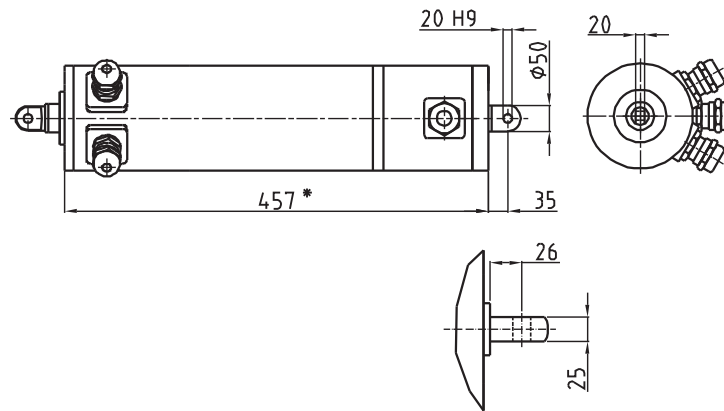
**Fixing version C**

**Fixing version D, E, F (Please define dimension I in order or inquiry)**


Subject to technical changes

**Dimensions options**

[mm]

Brake or  
Encoder or  
Potentiometer

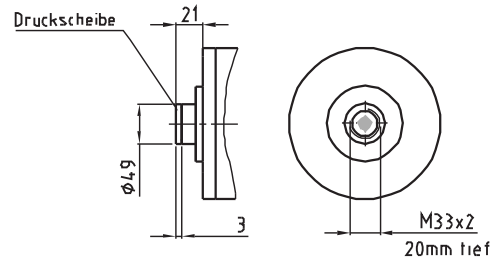
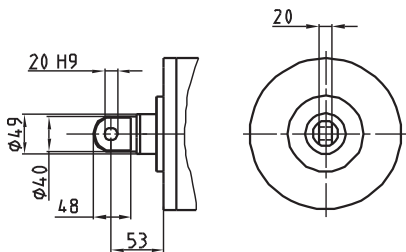


**Dimensions connection heads**

[mm]

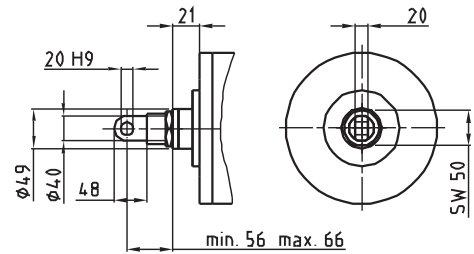
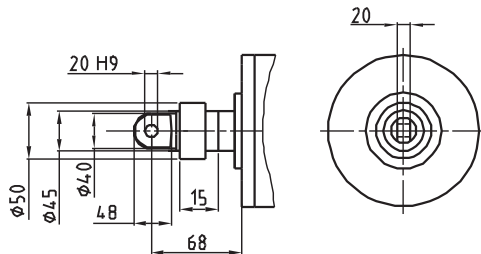
**Standard connection head**

**Without connection head**



**Adjustment**

**Adjustable connection head**



Subject to technical changes

### Power table

#### AC 3 x 230 / 400 V - 50 Hz

Motor speed min <sup>-1</sup>	Motor power kW	Duty cycle %	Planetary gear stages	Trapezoidal thread	Stroke speed mm/s	maximum stroke force [N] at stroke length [mm]			
						175	250 300	350 400	450 500
1400	1,5	15	1-st.	28x8 Ss	47*	8100	8100	8100	8100
1400	1,5	15	1-st.	28x5 Sd	29*	8900	8900	8900	8900
1400	1,5	15	1-st.	28x3 Sd	17,5	9900	9900	9900	9900
1400	1,5	15	2-st.	28x8 Ss	12	20000	20000	19400	13120
1400	1,5	15	2-st.	28x5 Sd	7,3	20000	20000	20000	20000
1400	0,75	40	2-st.	28x3 Sd	4,4	20000	20000	20000	20000
1400	0,5	50-60	3-st.	28x8 Ss	2,9	26000	26000	19400	13120
1400	0,5	50-60	3-st.	28x5 Sd	1,8	26000	26000	26000	20000
1400	0,5	50-60	3-st.	28x3 Sd	1,1	26000	26000	26000	26000

So = no self-locking; Ss = static self-locking; Sd = dynamic self-locking

1-stage = 4:1

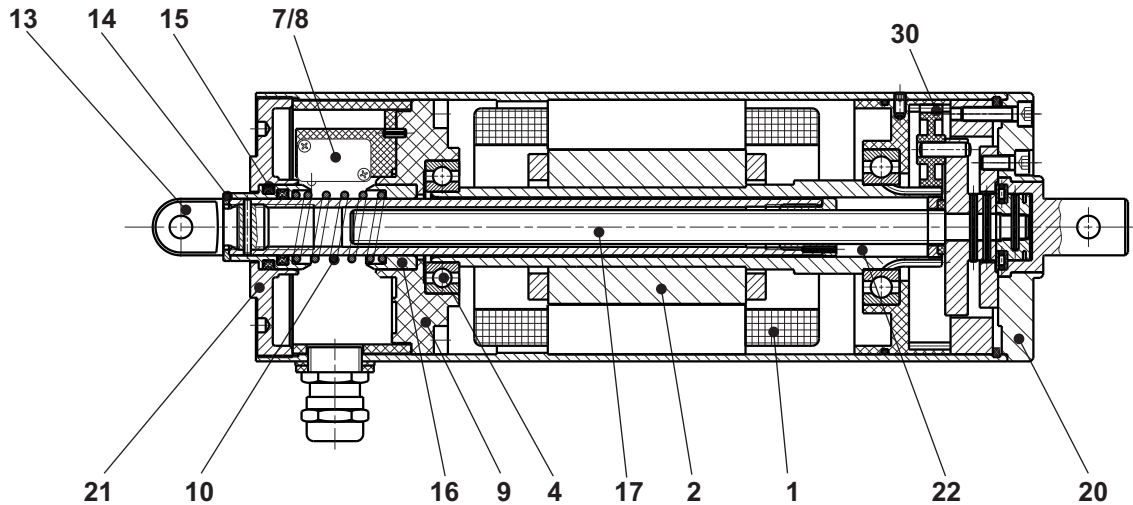
2-stage = 16:1

3-stage = 64:1

\* Starting at stroke speed of 20 mm/sec. a brake is requested.  
Duty cycle applies to 10 min. duty time.

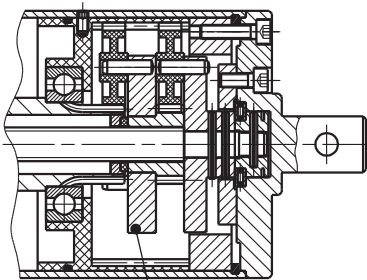
## Spare parts list

AC 3x230V / 110V

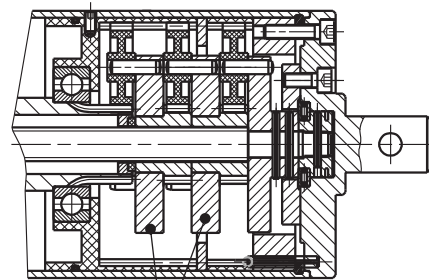


2-stage planetary gear

3-stage planetary gear



33



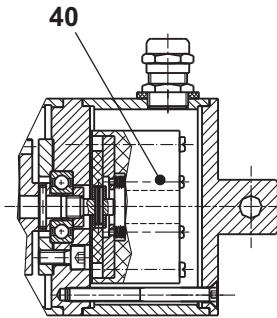
33

Pos.	Bezeichnung	Artikel-No.
1	Stator .....	Serial-No.
2	Rotor cpl.....	Serial-No.
4	Grooved ball bearing .....	00300100601080
7	Limit switch .....	02450100000600
8	Automatic disconnecter .....	02450100000250
9	Terminal board cpl.....	Serial-No.
10	Pressure spring .....	00155002890130
13	Connection head .....	Serial-No.
14	Pressure disc .....	Serial-No.
15	Switch jack 1 with quadrings .....	8-2030-01.11
16	Switch jack 2 .....	8-2030-01.12
17	Spindle cpl.....	Serial-No.
20	Gear cover .....	Serial-No.
21	Bearing plate .....	Z8-2030-01.14
22	Spindlenut, piston tube .....	Serial-No.
30	Planet wheel .....	8-2030-70.03
31	Internal ring gear cpl.....	Serial-No.
33	Planet wheel carrier toothed .....	Serial-No.

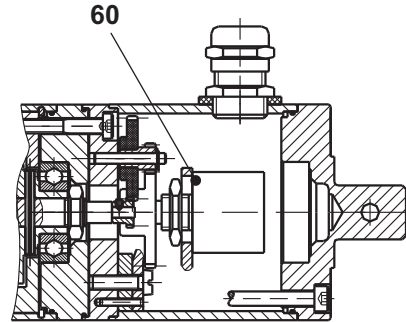
Subject to technical changes

### Spare parts list

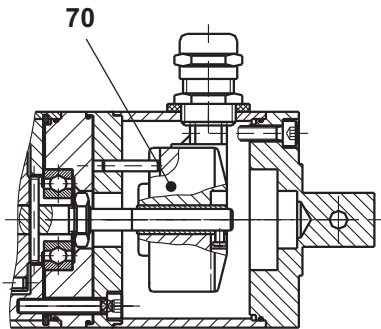
#### Spring applied single disc brake



#### Potentiometer



#### Encoder



Item	Part name	Article-No.
40	Spring applied single disc brake .....	Serial-Nr.
60	Potentiometer .....	Serial-Nr.
70	Encoder .....	Serial-Nr.

Subject to technical changes